

WHEELS, CARS, AND TRUCKS, KEEP ON TURNING

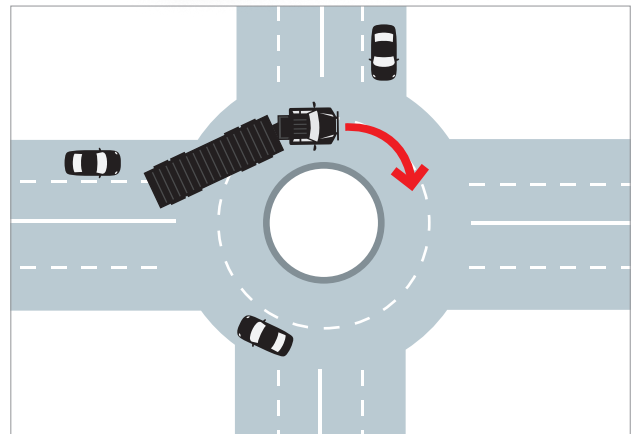
FACT SHEET 03 TURNING

BIGGER ISN'T BETTER.

Trucks, big and small, turn differently to cars. The bigger the truck, the bigger the turn and the more space they require on the road – **especially at roundabouts, corners and intersections.**

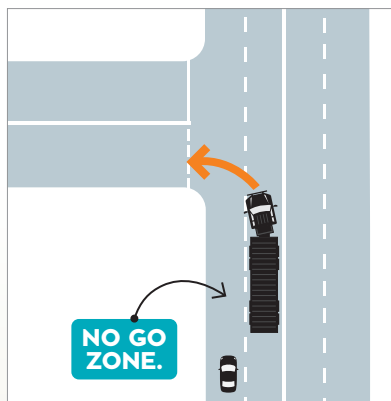
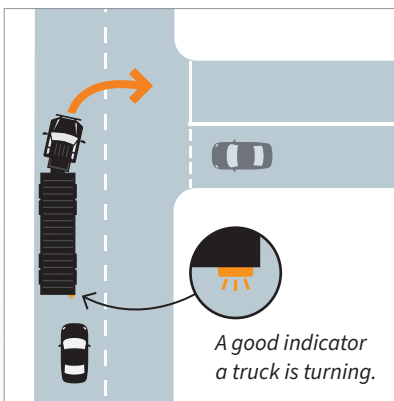


Trucks over 7.5m long wear a 'Do Not Overtake Turning Vehicle' sign – this means these trucks can use both lanes at large roundabouts, or turn left from a second or third lane. It also means what it says – **do not overtake a turning vehicle.**



WHAT SHOULD YOU DO?

When traveling behind or beside trucks, watch for their indicators. If a truck is turning, you need to keep out of its way. Keep a safe distance, give the truck room to move, stay out of blind spots and be patient.



Based on information from the Government of South Australia's "The Driver's Handbook".